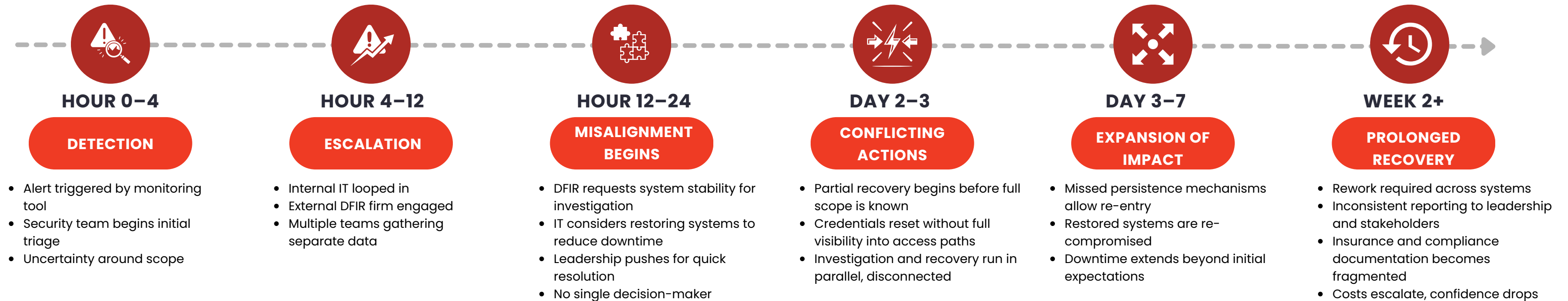
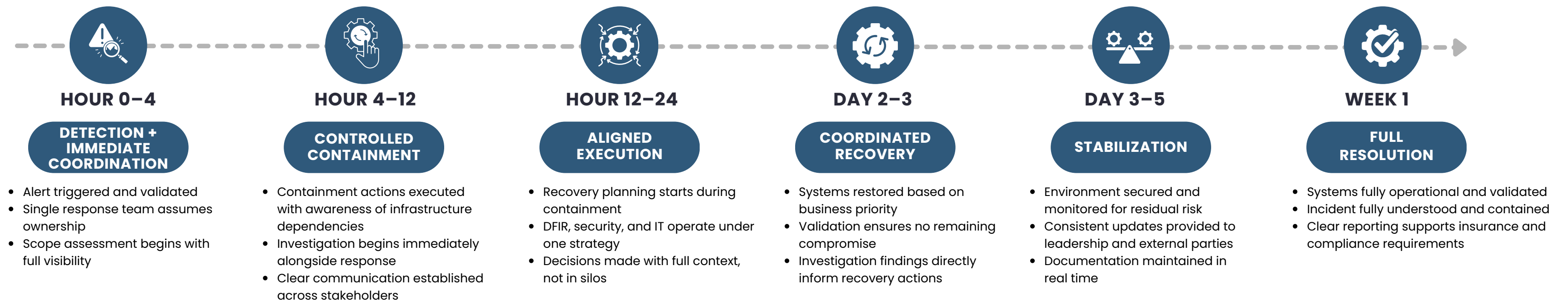


# Fragmented vs Owned Response Timeline

## Fragmented Response (What Most Organizations Experience)



## Owned Response (Integrated, Accountable Model)



### FRAGMENTED RESPONSE:

- Decisions delayed
- Teams misaligned
- Recovery reactive
- Risk reintroduced

### OWNED RESPONSE:

- Decisions immediate
- Teams unified
- Recovery proactive
- Risk contained